



KNG-PxxxS USB Driver Installation

Introduction

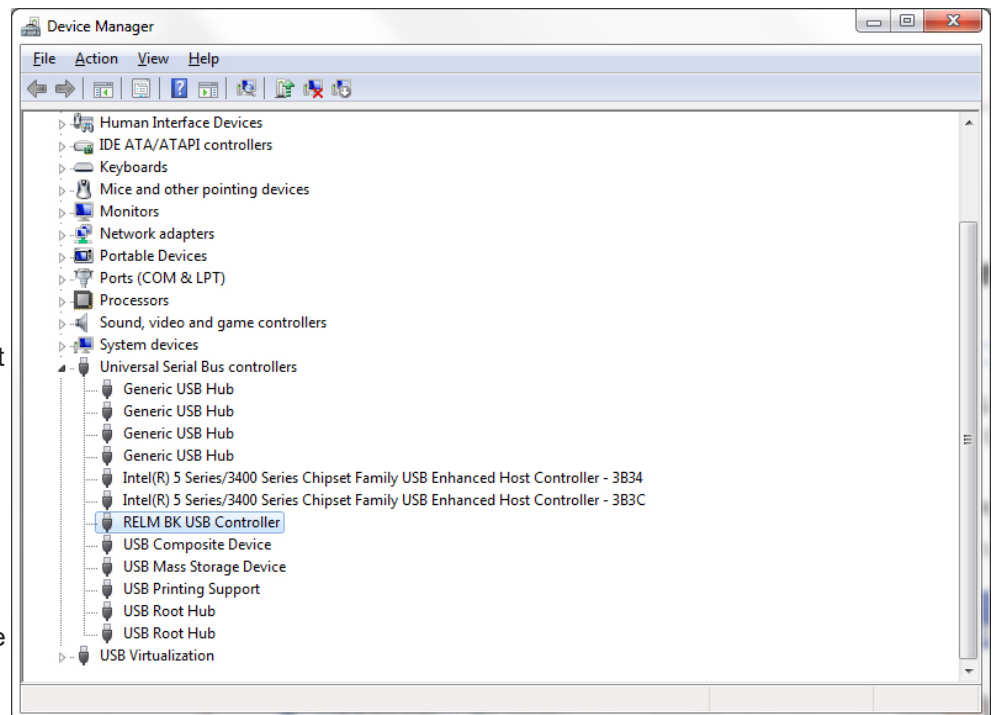
This instructional document will walk through the steps to correctly install the KNG-PxxxS USB Driver on Windows 7.

NOTE: Older drivers must be uninstalled before installing the updated driver for the KNG-PxxxS.

Uninstalling Old Drivers *(New installations can proceed to the 'Installing Driver' section)*

Step 1: Attach the KNG radio to a USB port of the computer with the programming cable (KZA0710) provided. Turn the radio on.

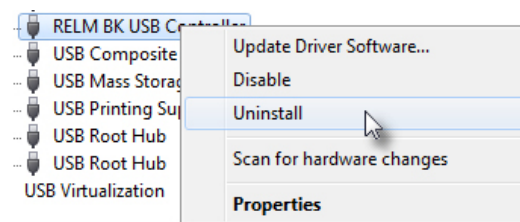
Step 2: Open the Windows Control Panel from the Windows icon in the lower left corner of the screen. Select "Hardware and Sound"; then select "Device Manager". You should see the following screen:



Step 3: On the branch "Universal Serial Bus Controllers" you should see the device "RELM BK USB Controller". You may need to click the left-side triangle to see the device.

Step 4: Right-click on "RELM BK USB Controller".

You will see the following pop-up menu:



Step 5: Click on "Uninstall".

The following screen will appear:

Step 6: Making sure that the "Delete the driver software for this device" box is checked, click the "OK" button.



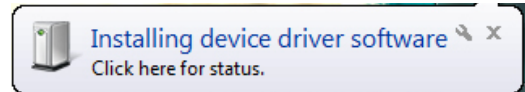
Step 7: Turn off radio and disconnect USB connection after uninstall is complete.

Installing Driver with Internet Connection

(Users that have restricted internet access can refer to the 'Installing Driver Manually' section)

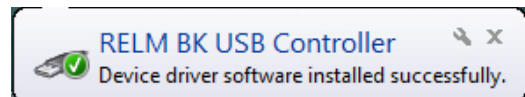
Step 1: Attach the KNG radio to a USB port of the computer with the programming cable (KZA0710) provided. Turn the radio on.

Step 2: Allow Windows to automatically install the device driver software.

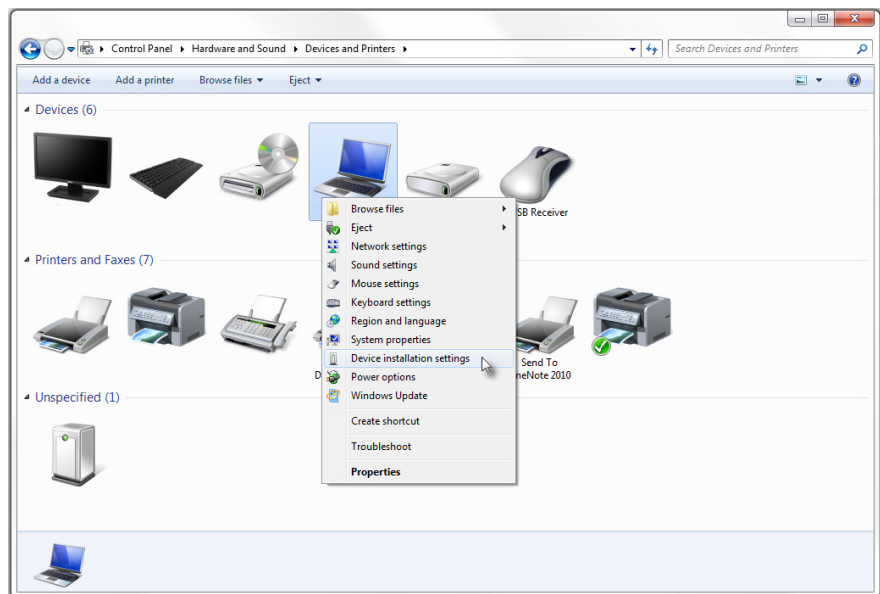


Step 3: When the installation is complete, you will see the confirmation as shown. The driver has been successfully installed.

If the driver installation was not successful, move to Step 4.



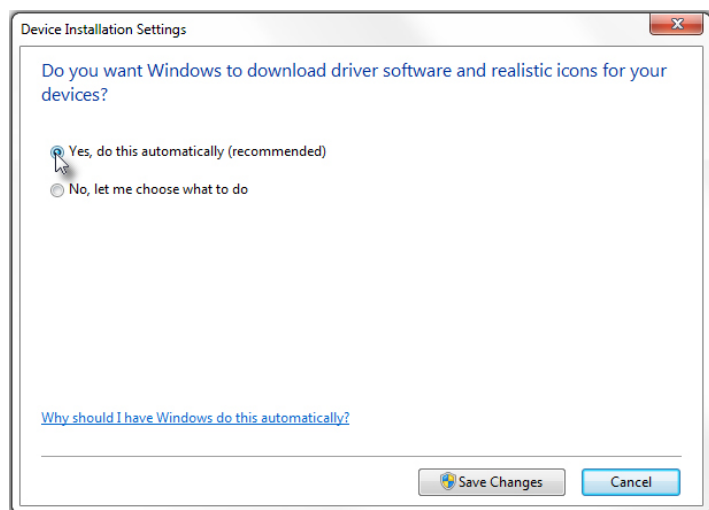
Step 4: It may be necessary to change the setting for Device Installation. Open the Windows Control Panel from the Windows icon in the lower left corner of the screen. Select "Hardware and Sound"; then select "Devices and Printers". You should see the following screen:



Step 5: Select and right-click the computer from the Devices section and click "Device installation settings".

Step 6: Make sure that the option for "Yes, do this automatically (recommended)" is selected and then click the "Save Changes" button. Repeat Steps 1-3.

NOTE: If the installation is still unsuccessful, the computer may need to be rebooted and/or the user may need to contact their IT Department to complete the installation.

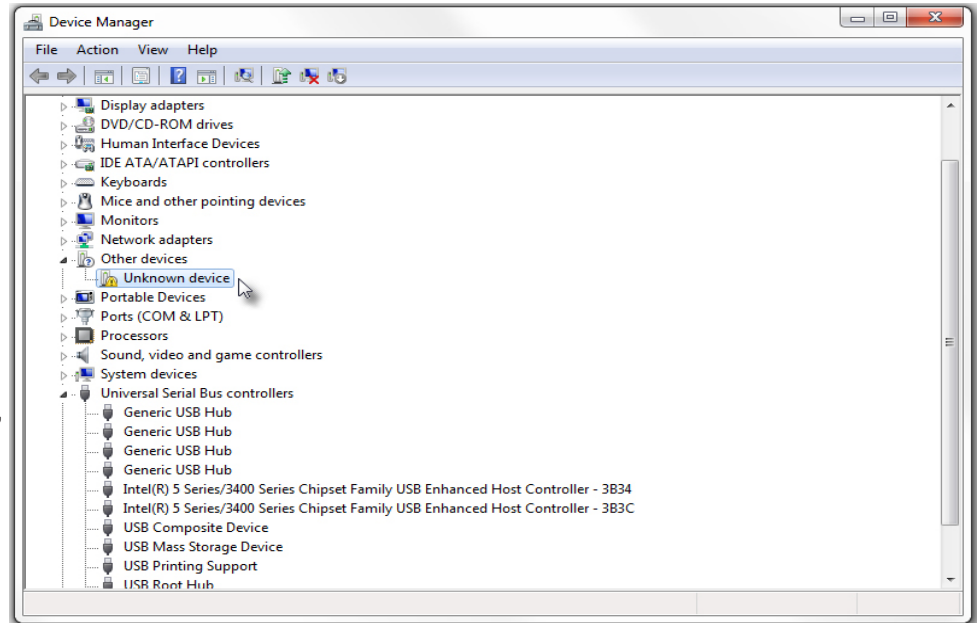


Installing Driver Manually

Step 1: Attach the KNG radio to a USB port of the computer with the programming cable (KZA0710) provided. Turn the radio on. If computer cannot download the driver automatically the following message should show in the lower right corner of the screen:

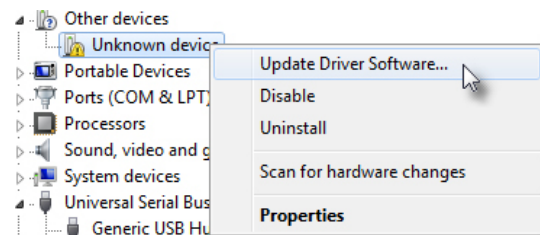


Step 2: Close the error message, and open the Windows Control Panel from the Windows icon in the lower left corner of the screen. Select "Hardware and Sound"; then select "Device Manager". You should see the following screen:

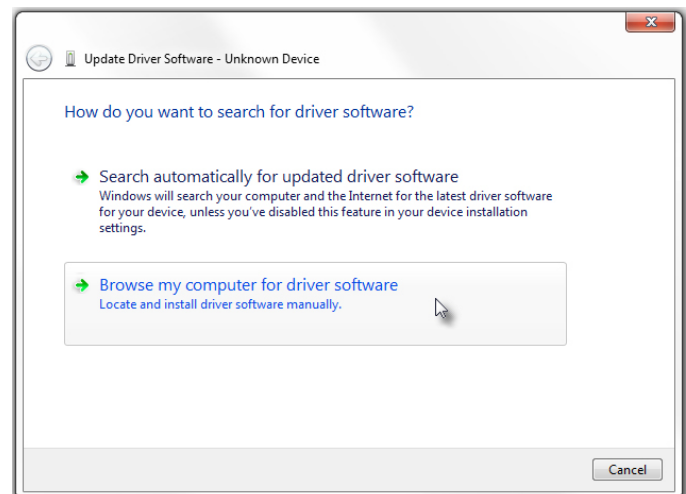


Step 3: On the branch "Other devices" you should see the device "Unknown device". You may need to click the left-side triangle to see the device.

Step 4: Right-click on "Unknown device". You will see the following pop-up menu:

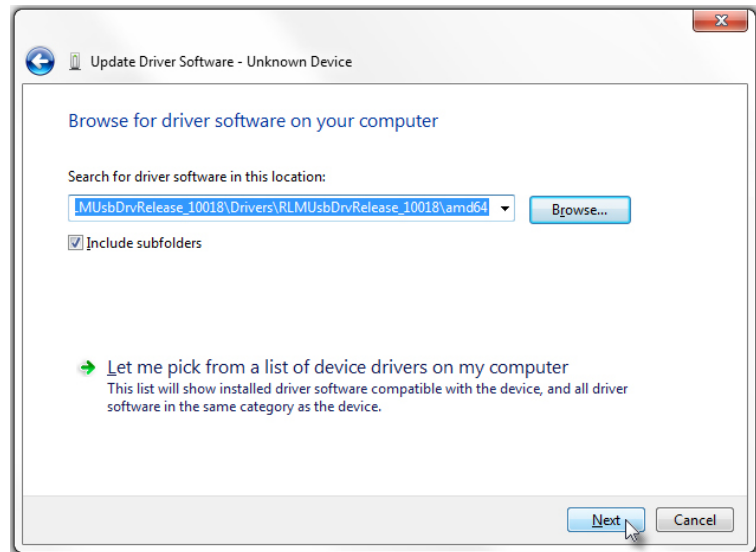


Step 5: Click on "Update Driver Software...". The following screen will appear:

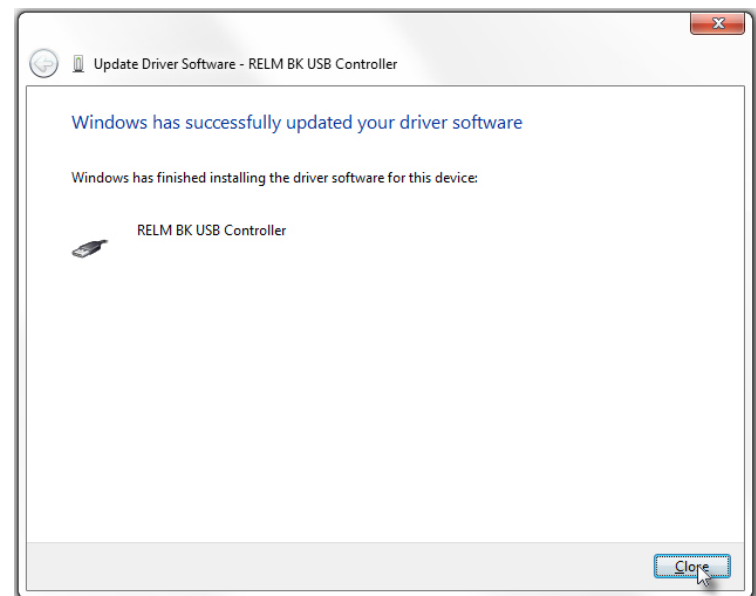


Step 6: Select "Browse my computer for driver software".

Step 7: Navigate to the folder “Drivers” (CD) or the folder you selected for download (Internet). Once the correct folder has been selected, click “Next”.



Step 8: Confirm that Windows has installed the driver:



NOTES:

- (1) The KNG radio driver will not install to Windows 7 Home Premium. At minimum, Windows 7 Professional is required.
- (2) The driver supports only the non-trunked KNG radios (P150S/P400S/P500S).
- (3) Users with limited access to their computer may have to consult with their IT Department to complete installation.